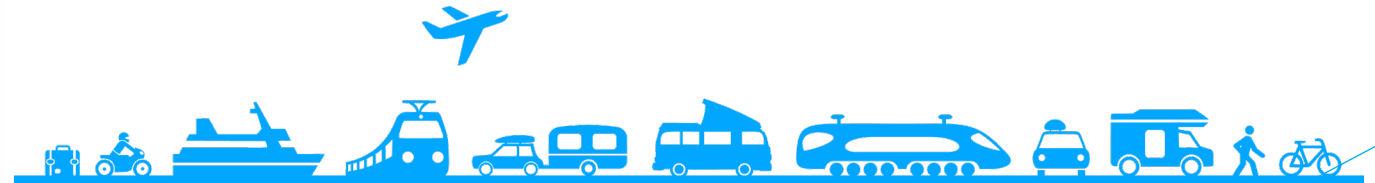




North Merritt Island HOA

February 3, 2025

Transportation Network of Tomorrow



Georganna Gillette
Executive Director
georganna.gillette@sctpo.com

More About the Space Coast TPO



What is transportation planning?

We continually monitor the conditions of our transportation system's modes.

We carry out planning at the regional level.

We work with our citizens, local governments, transportation agencies, and elected officials, to help address our needs.

A TPO is created to look at the big picture of transportation planning.



1 County



16 Cities & Towns



2 Major Airports

- ▶ Melbourne–Orlando International Airport
- ▶ Space Coast Regional Airport



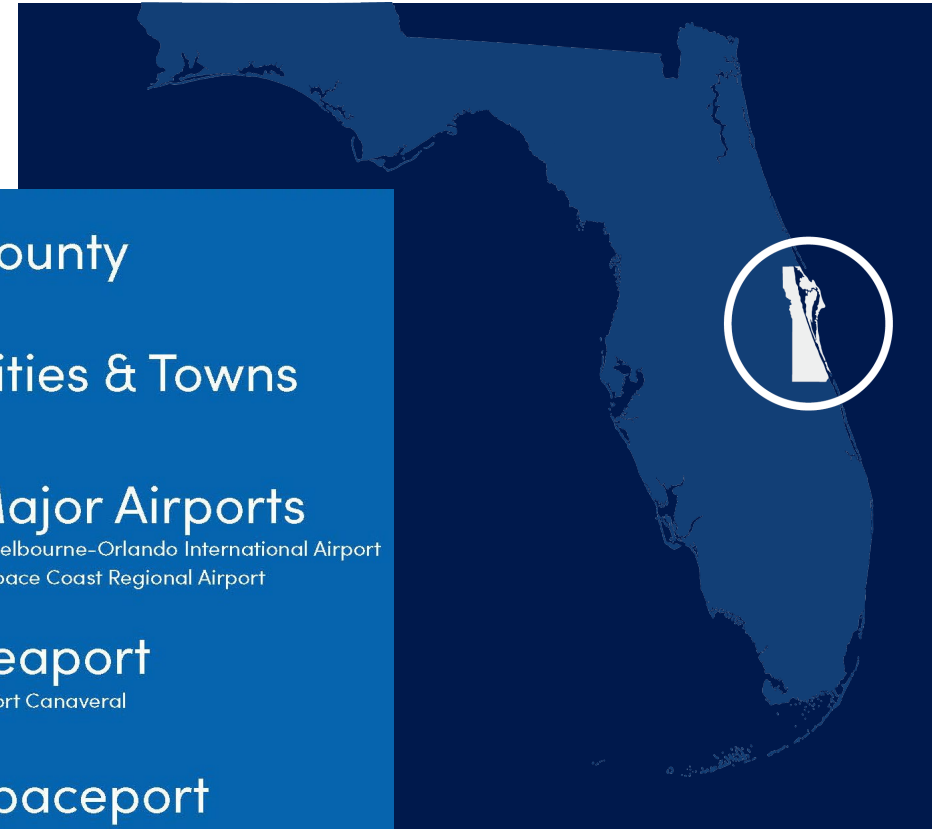
1 Seaport

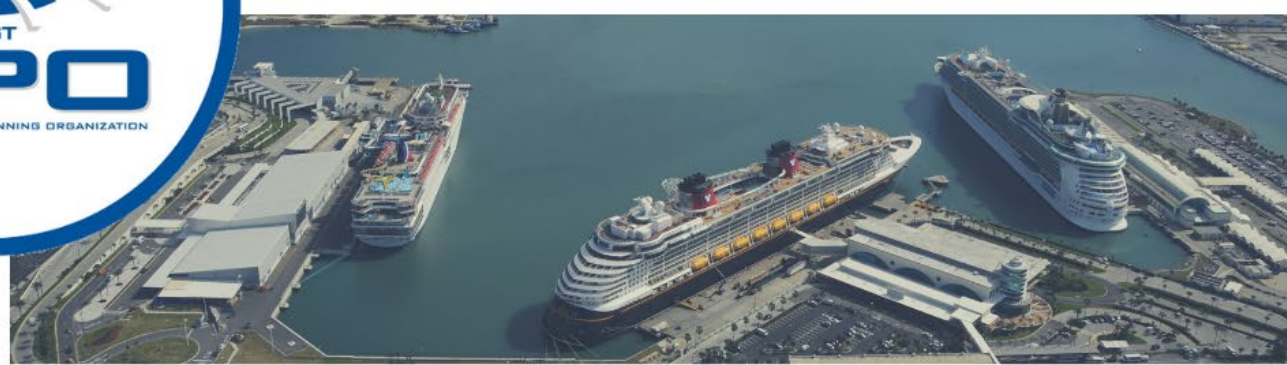
- ▶ Port Canaveral



1 Spaceport

- ▶ Cape Canaveral Spaceport





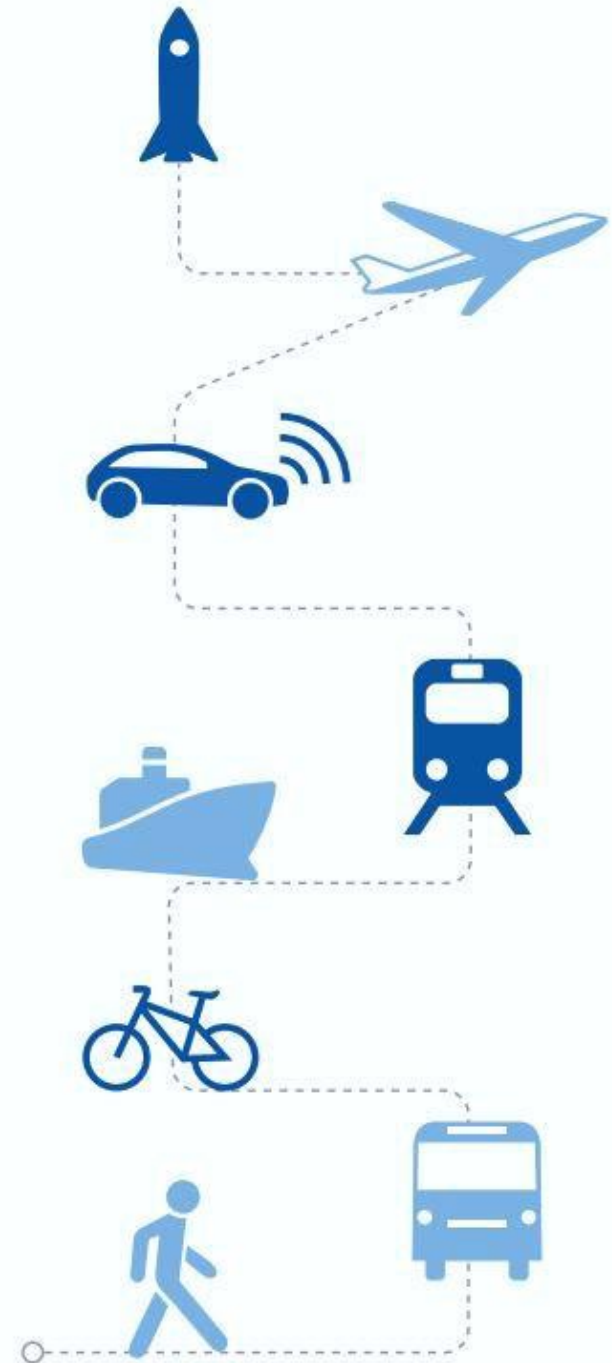
Things that drive WHAT road projects TPO undertakes

- Connectivity
- Economic Competitiveness
- Growth
- System Performance / Safety
- Cost Feasibility
- Public Acceptance



Long Term Vision

- Invest in ports (Space, Sea, Air)
- Continue high tech focus
- More walkable communities
- Less reliance on autos
- Wider variety of housing
- More travel options (Transit, Rail, Rideshare, Walk, Bike, Trails)



Leverage Intermodal Connections

Diverse Transportation Portfolio



Leverage High Tech Industry

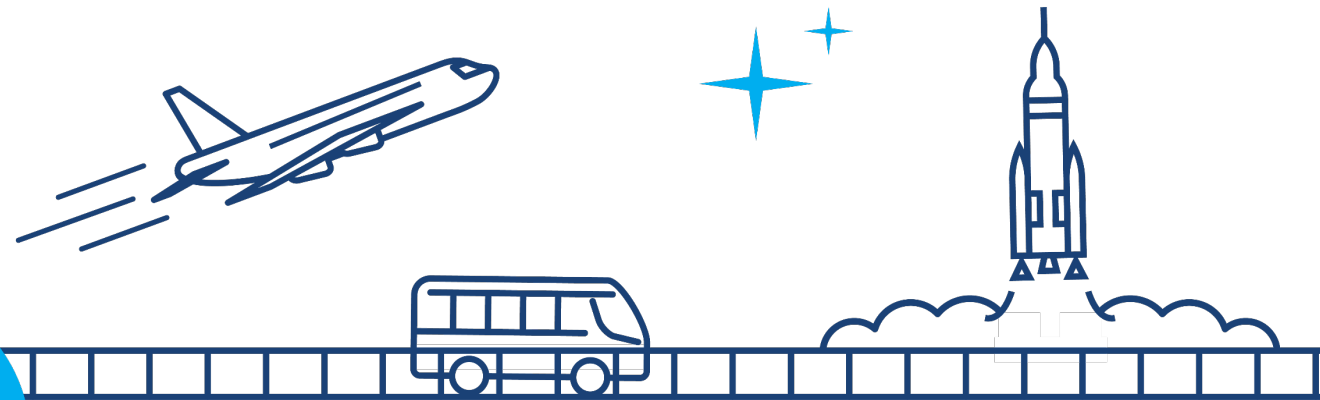
Changes in Workspace and Transportation



Balance Environment and Growth

Provide Choices Reduce Urban Footprint

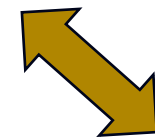




L RTP
Long Range
Transportation
Plan

LIST OF PRIORITY PROJECTS

TIP
Transportation
Improvement
Program

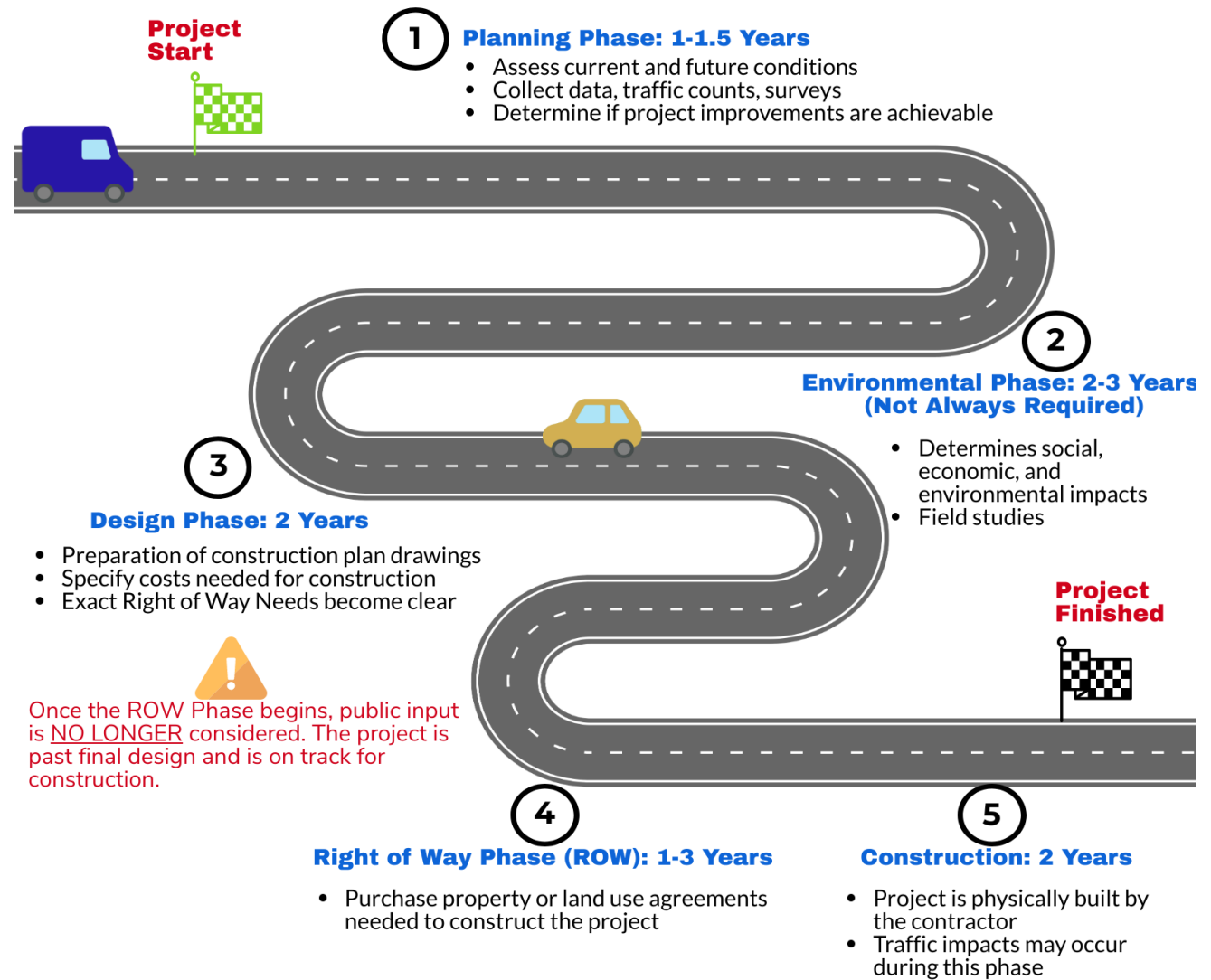


FDOT
Work
program

5 Steps to Project Implementation

1. Feasibility
2. Project Development & Environment Study (PD&E)
3. Design
4. Right of Way
5. Construction

Projects may take **15-20** years or more to complete!



Priority Projects



NASA Causeway Bridge Replacement Space Commerce Way Widening



Bridge Construction Underway:

\$126 Million

Space Commerce Way
Construction: **\$24 Million**

Ellis Road Widening

- ✓ Right of Way Acquisition
 - 83 parcels to acquire (total)
 - ✓ Certified by January 29, 2025
- ✓ Early clearing and grubbing contract – July 2025
- ✓ Construction fully funded 25/26

Fully Funded:

\$58 Million



SR 528 (Beachline) Widening and Bridge Replacements



528

FROM EAST OF SR 524 (INDUSTRY ROAD) TO EAST OF SR 3
FROM EAST OF SR 3 TO PORT CANAVERAL INTERCHANGE



FMNs:
40740233201
40740243201
September 11, 2017

ROW Underway

Construction Unfunded



SR 401 Bridge Replacement

Design Underway

Construction Unfunded

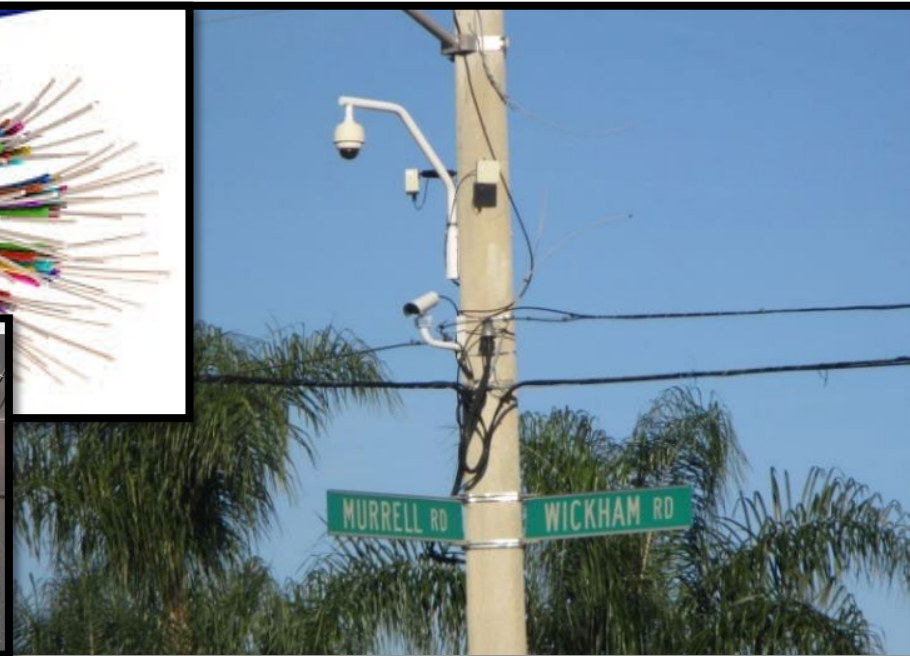
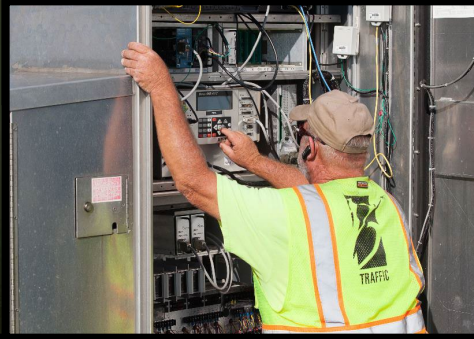
Port Canaveral



Cocoa Multi-Modal Station

- ✓ Federal State Partnership Grant (Final Design & Construction) **Submitted December 16, 2024**
- Similar in design to Brightline's Boca Raton Station (7,500-9000 sf)
- Parking to accommodate 400 spaces
 - Surface Parking for station opening
 - Structured Parking during later phases
- Public transit and kiss-and-ride facilities at station
- Access to/from property from local roadways; opportunities to connect to multiple access points
- New rail infrastructure west of station (double track main line)
- Double-sided platform





Construction 2025

\$16 Million



Transportation Management Center

Transportation Take Aways

Transportation Impacts Everyone

Most citizens do not realize:

- How expensive transportation projects are
- How long it takes to implement major improvements
- There is a process to identify, agree upon and fund important projects and programs.

Providing transportation in the US involves:

- Federal, state, and local government

Decision-making process begins with TPO board of elected officials



Where do you see our transportation system in 25 Years?



- **Connected**
- **Futuristic**
- **Multimodal**
- **Safe**
- **Resilient**





Stay Connected



@SCTPO



Space Coast TPO



SCTPO



www.SpaceCoastTPO.com



North Merritt Island Home Owners Association

February 3, 2025
FM# 439893-1-14-01



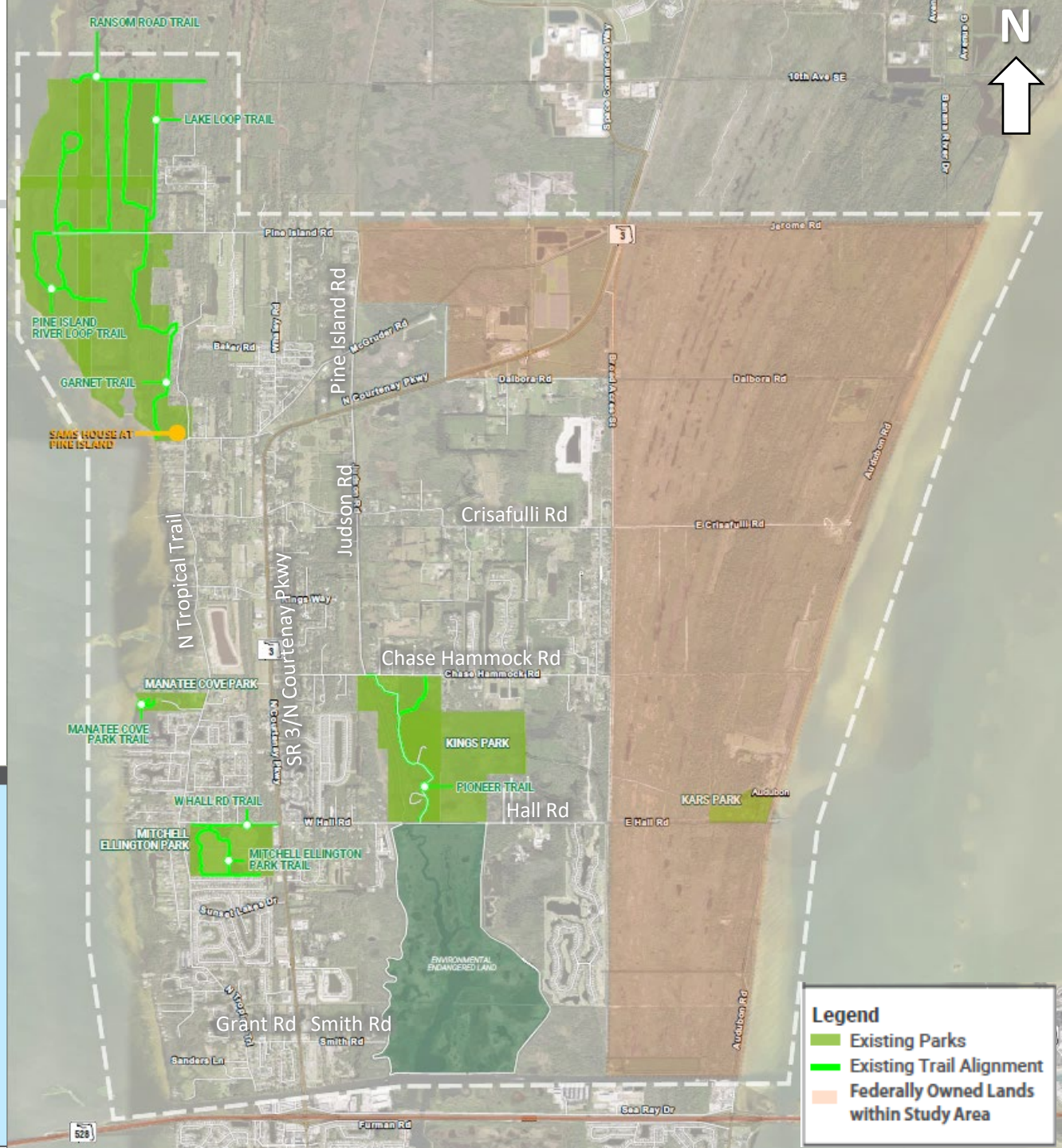
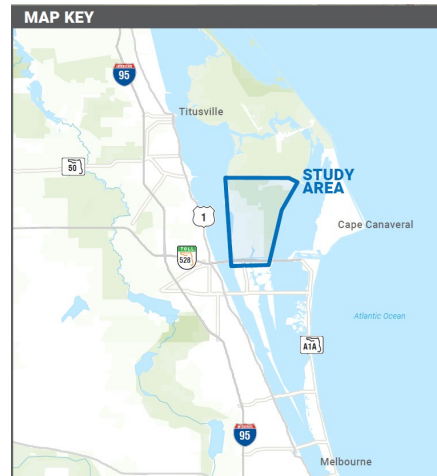
Agenda

1. Project Introduction
2. Schedule Overview
3. Purpose & Need Overview
4. Alternative Analysis
 1. *Potential Alignments*
 2. *Recommended Alignment*
5. Next Steps
6. Open Discussion

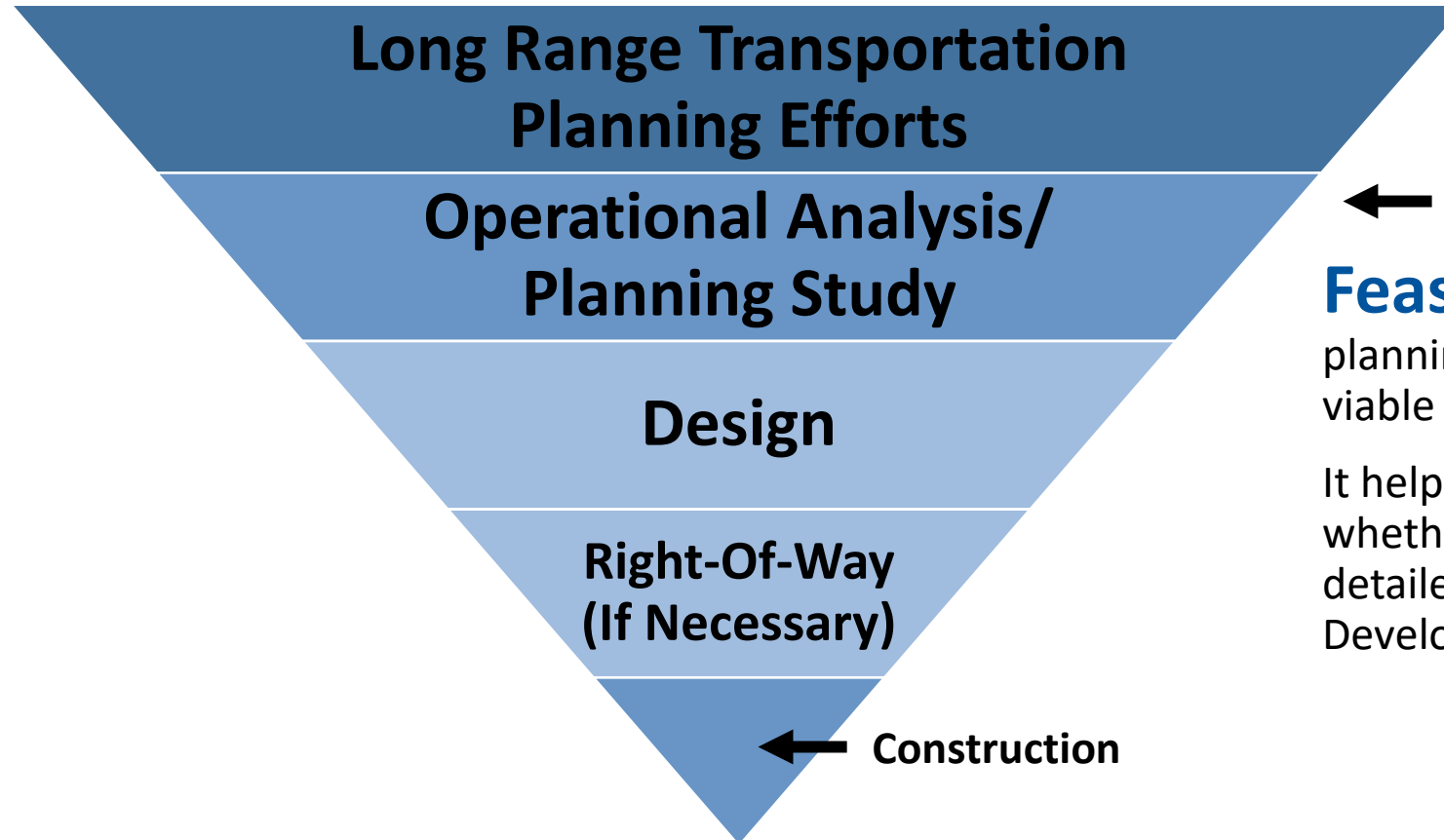
Project Introduction

N MI Pioneer Trail Feasibility Study

- FDOT SUN Trail program funding Study; application submitted by Brevard County
- SCTPO in conjunction with Brevard County Parks & Recreation and FDOT
- Identified on the SCTPO Showcase Trail Network
- Essential spur for the East Coast Greenway
- Critical local connection for residents and the recreational areas



Project Process Overview

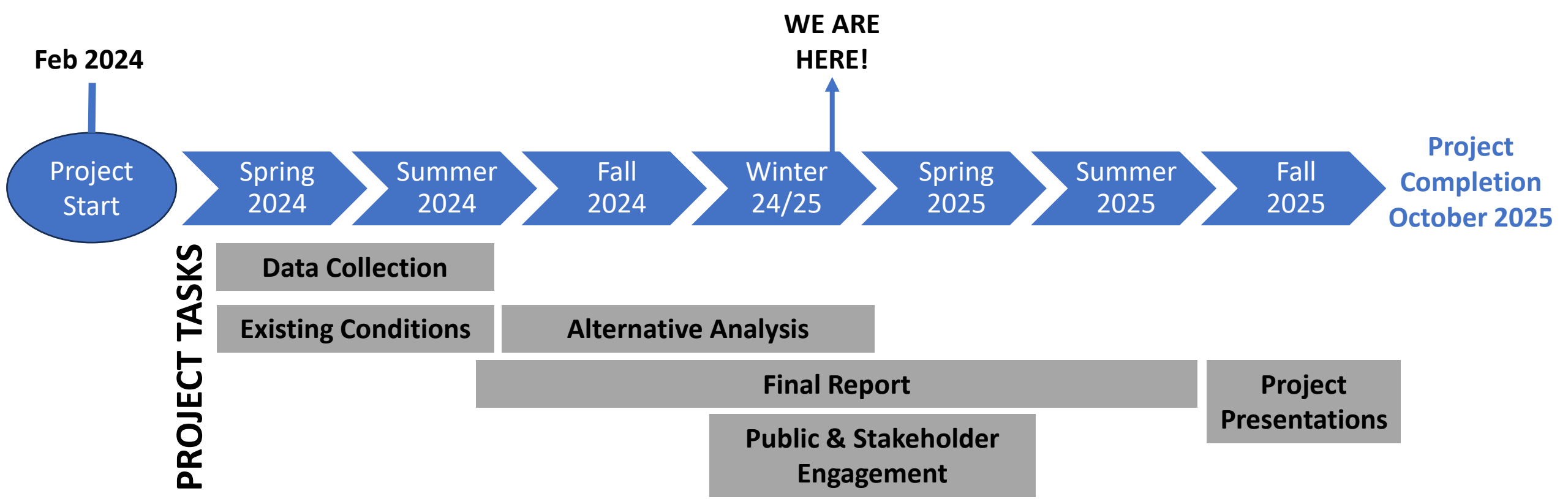


← ★ WE ARE HERE

Feasibility Study is an early step in the planning process to decide if a proposed project is viable and worth pursuing.

It helps identify potential challenges, benefits, and whether the project should move forward to more detailed planning and design phases, like a Project Development & Environment (PD&E) Study.

Schedule Overview



Purpose & Need Overview

Purpose – Provide a safe trail connection from S.R. 528 to the Pine Island Conservation Area

Need –

- **System Linkage:** Provide continuous trail connection on North Merritt Island as part of the larger SUN Trail network in Brevard County
- **Safety:** Provide a physically separated facility for non-vehicular travel for local residents and recreational uses
- **Economic Development:** Trails increase property values, has local business/employment benefits, promotes a healthy lifestyle, and boosts tourism
- **Modal Interrelationships:** Provide safe/comfortable recreation facility for North Merritt Island



Potential Alignments

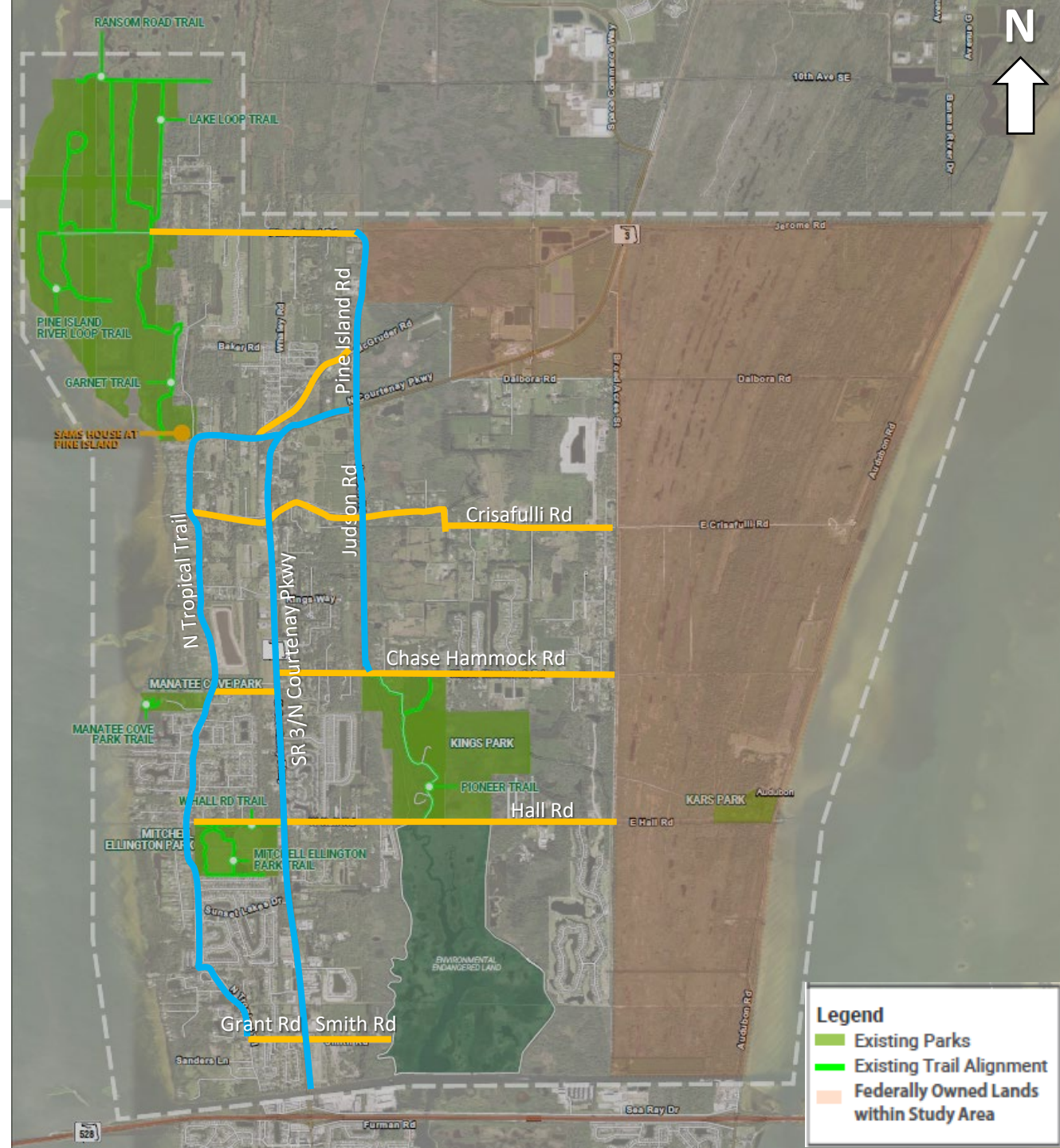
N/S Alignments represented in Blue

- N Courtenay Parkway
- N Tropical Trail
- Judson Road

E/W Alignments represented in Orange

- Grant Road
- Smith Road
- Hall Road
- Chase Hammock Road
- Porcher Road
- Crisafulli Road
- McGruder Road
- Pine Island Road

Trails and parks represented in Green



Recommended Alignment Summary

Area to Explore

- Pine Island Conservation Area connection via Sams House

Recommended N/S Alignment in Green

- N Tropical Trail

Recommended E/W Alignment in Green

- Grant Road

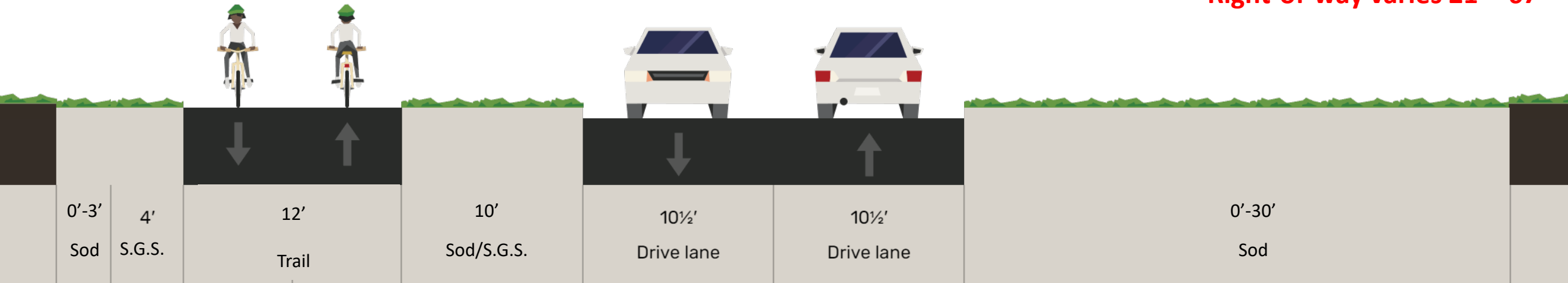
N Courtenay Parkway in Green



N Tropical Trail Typical Section

Alternative 1 – West Side of N Tropical Trail

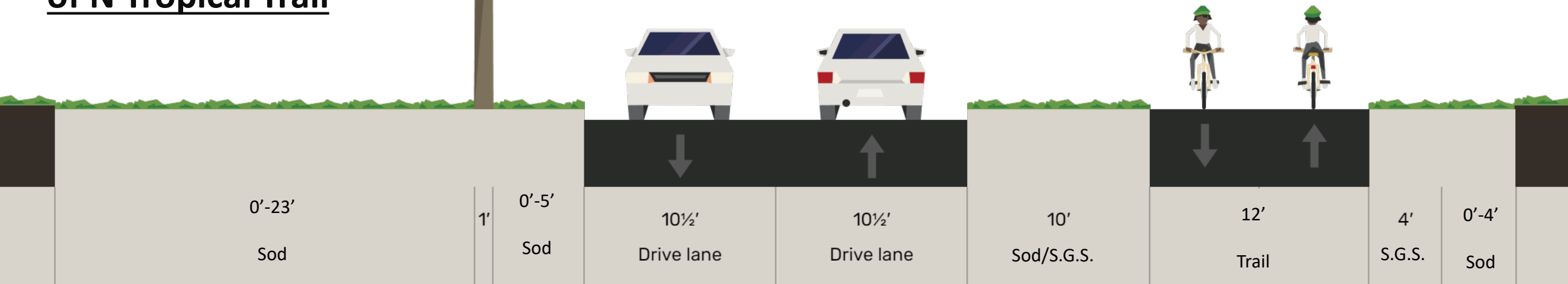
Right-of-way varies 21' - 67'



Alternative 2 – East Side of N Tropical Trail

Abbreviations

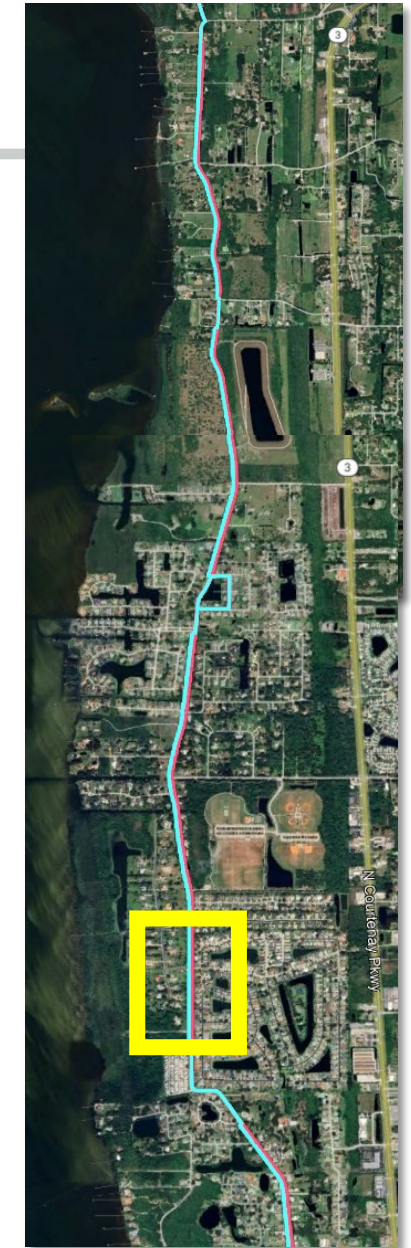
- S.G.S.: Stabilized Grass Shoulder



N Tropical Trail from Grant Road to Sams House

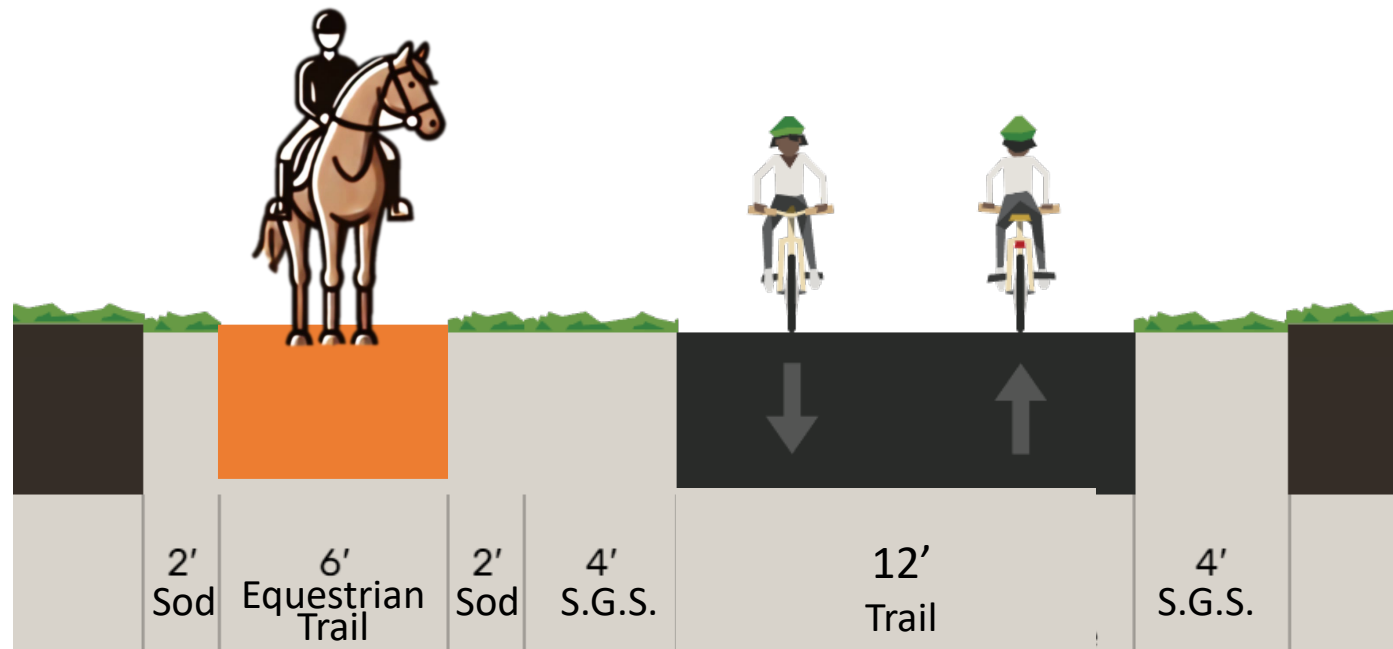
Alternative 1: West side of N Tropical Trail
Alternative 2: East Side of N Tropical Trail

Some deviations to avoid homes, cemeteries, and swales



Pine Island Conservation Area Trail Typical Section

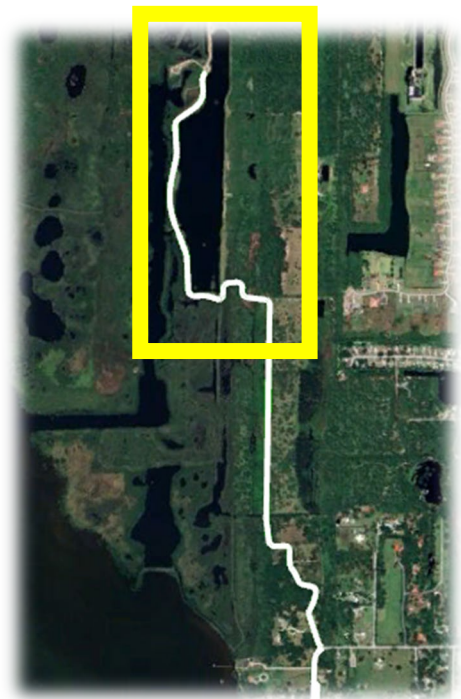
Pine Island Conservation Area



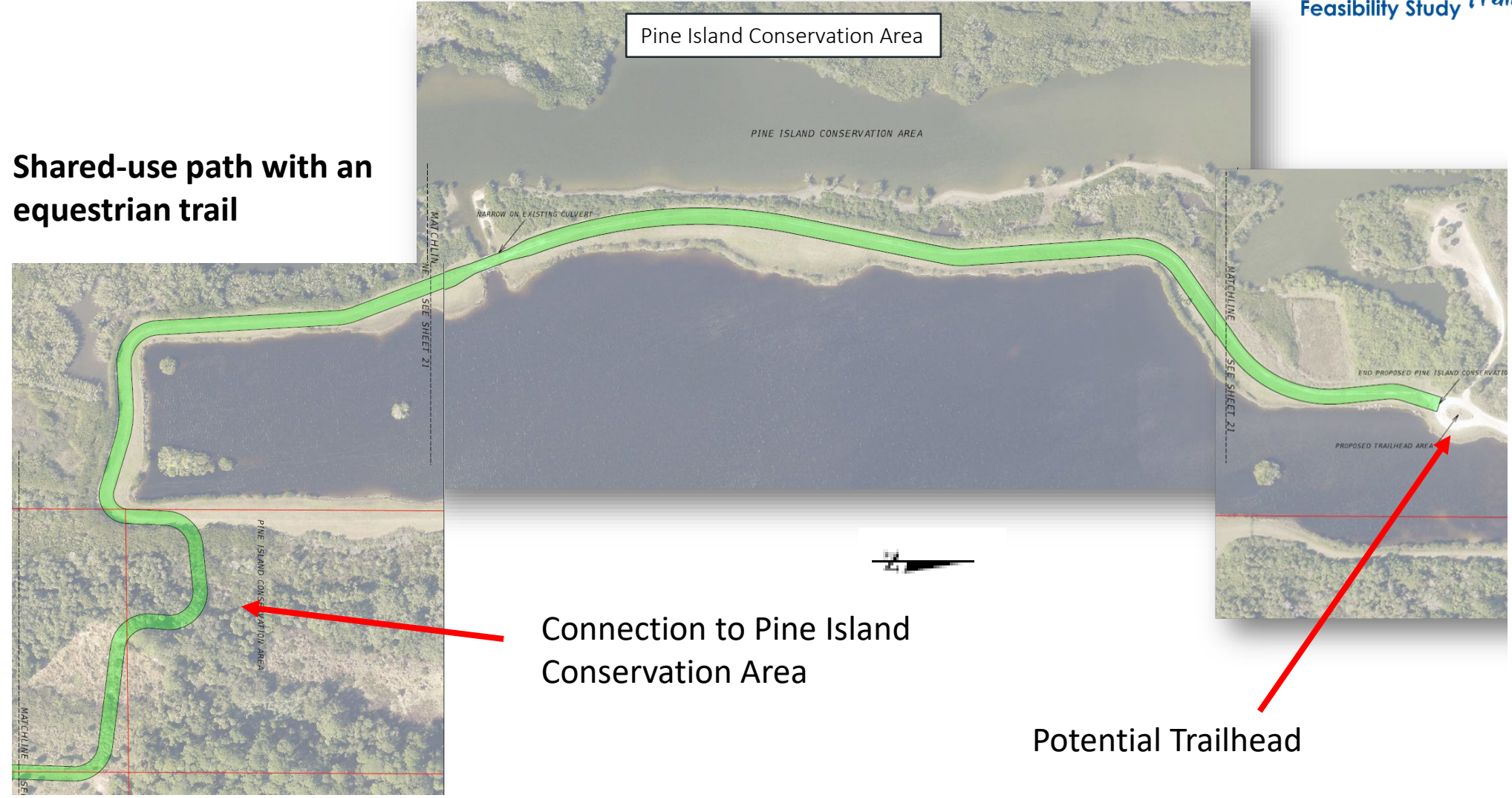
Abbreviations

- S.G.S.: Stabilized Grass Shoulder

Pine Island Conservation Area



Shared-use path with an
equestrian trail





Next Steps



PROJECT TASKS



Stakeholder Meetings

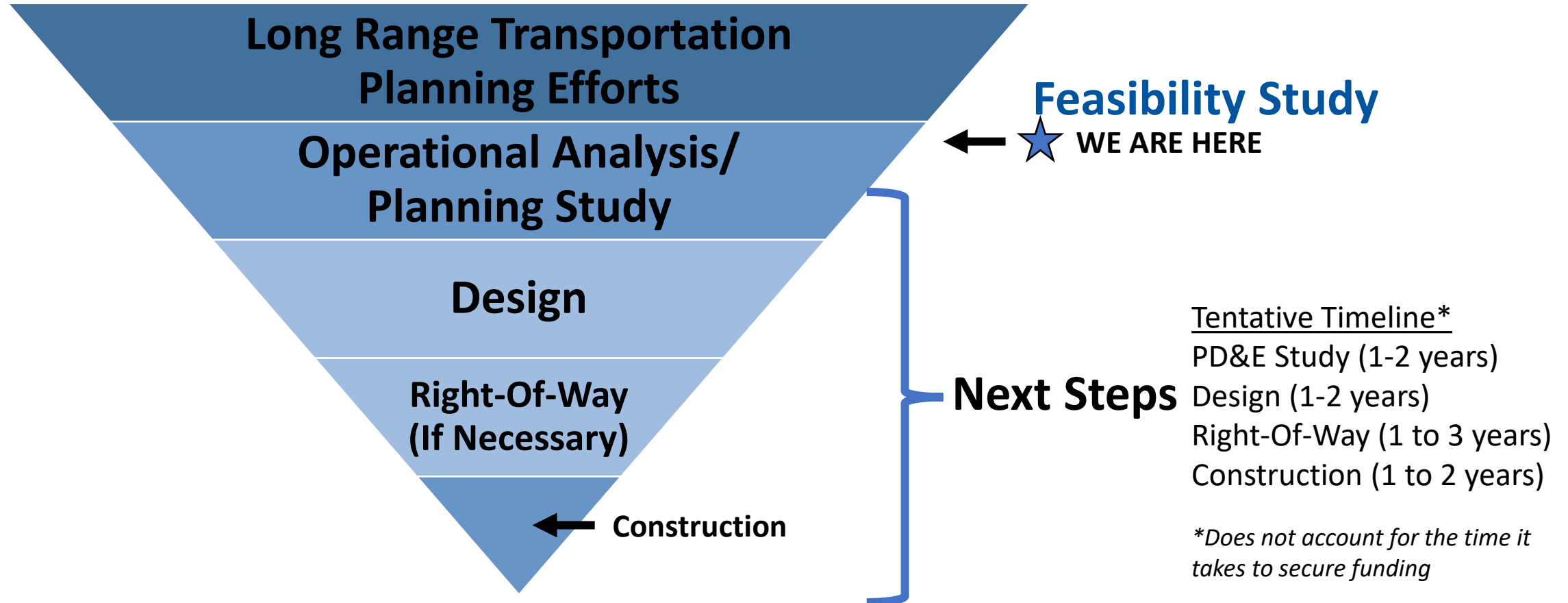
- Brevard County, Jim Liesenfelt Assistant County Manager – Met January 13, 2025
- District 2 Commissioner – Met January 31, 2025
- Brevard County EEL Program – Met February 3, 2025

In-Person Public Open House – March 26, 2025 at 5:30PM

Moose Lodge 2073 (3150 N Courtenay Pkwy, Merritt Island, FL 32953)

Virtual Public Open House – April 1, 2025 at 12:00PM

Project Process Next Steps



Questions?